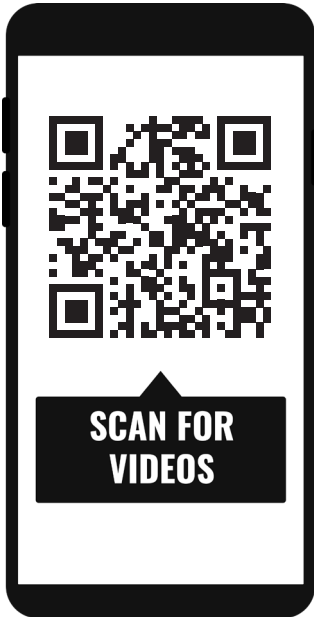




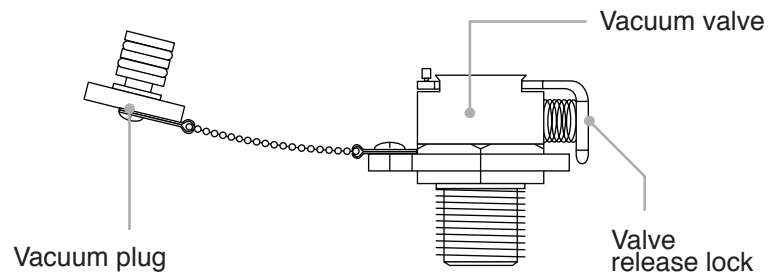
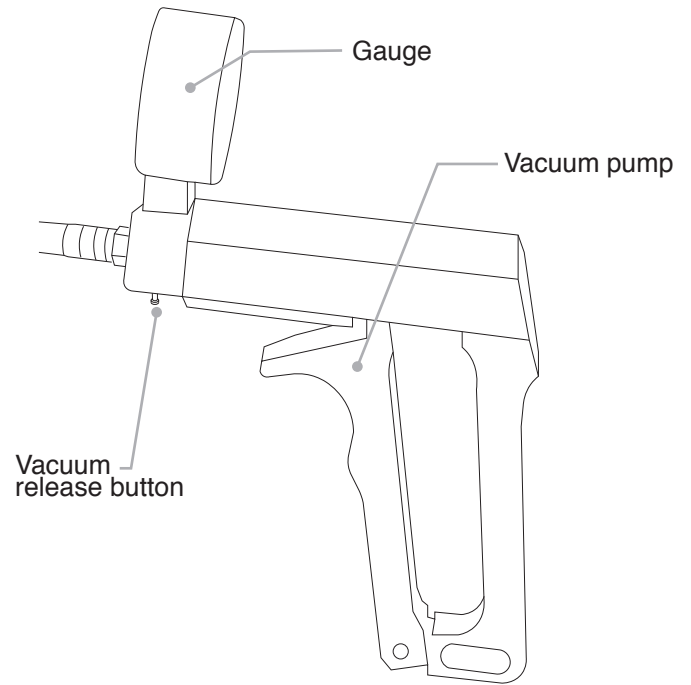
## Vacuum Pump with Gauge

Item number 47011



### Product Use & Video Tutorials

<http://ikelite.com/watch-47011>



### Included in the Box

- Vacuum pump with gauge
- Rubber tubing
- Tubing insert # 47005 (installed)

### Important Notices

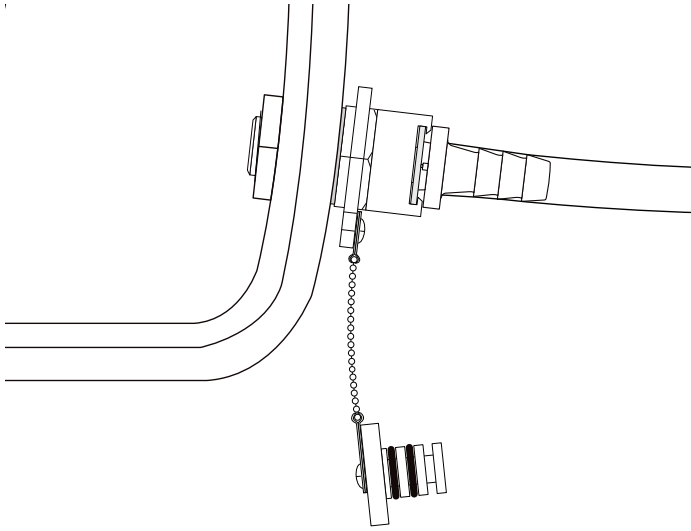
- » The vacuum pump is not airtight. Do not leave the vacuum pump attached to your system overnight.
- » The vacuum valve is only waterproof with the plug in place. Never submerge the housing in water without the plug properly installed in the valve.
- » Vacuum systems are only capable of simulating depths up to 33 feet (10 meters). Some very small leaks, like those caused by a fine hair across the o-ring, may only occur at deeper depths. In most cases, these leaks are not significant enough to cause damage to a camera.
- » A vacuum system cannot correct for improper assembly.

### Installation and Use

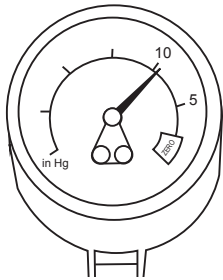
#### Getting Ready for a Dive

- » The housing is only waterproof with the vacuum valve plug in place. Always replace the valve plug before putting the housing in water.
1. Install your camera in the housing.
  2. Press the vacuum valve lock release and remove the plug from the valve.

3. Attach the vacuum pump tubing insert into the valve and push until it clicks and locks in place.



4. Pump the hand pump until the vacuum gauge reaches 5-10 inches Hg.



5. Watch and listen for leaks. A leak is indicated by movement of the gauge towards zero after you finish pumping. Significant leaks can generally be found within a few minutes.
6. Press the lock release and remove the vacuum pump from the valve.
7. Install the valve plug into the valve and push until it clicks and locks in place.
8. If desired, re-attach the pump after letting the system sit for hours or overnight. Check that the gauge returns to the same position as when the system was assembled. Very small leaks will become more evident on the gauge as more time passes.
9. Before diving, submerge the housing in a fresh water tank dedicated to underwater photography equipment. Visually confirm that there are no signs of water intrusion. One sign of a leak is a steady stream of bubbles coming from one of the housing's seals.

## Opening the Housing

- » **It is not possible to open the housing normally when a vacuum is pulled on the housing. The vacuum must be released prior to opening the housing.**
1. Rinse the housing with fresh water prior to opening.
  2. Press the vacuum valve lock release and remove the plug from the valve.
  3. Attach the pump to the valve and press the release button on the pump.
  4. If the pump is not available, insert a small blunt object into the center of the valve and gently press to allow air to enter the housing.

## Limited Warranty

This Ikelite product is warranted against any manufacturing defects for a period of one (1) year from the original date of purchase. To obtain warranty service, the product must be returned to Ikelite postage paid. Ikelite will, at its sole discretion, repair or replace such products, and will return to customer postage paid. All other claims of any nature are not covered. Except as mentioned above, no other warranty expressed or implied applies to this Ikelite product.

## Contact Us

Ikelite Underwater Systems  
50 W 33rd St  
Indianapolis, IN 46208 USA  
(317) 923-4523  
ikelite@ikelite.com